

JEWELL

associates engineers, inc.

Engineers - Architects - Surveyors

The Wedge Across the Hedge

An Accessory Dwelling Unit

By James Stenze, CDT



Affordability

- The low pitch of the roof means less truss/roofing material.
- The footprint is close to a square, reducing lineal footage of walls. In turn, reducing exterior finishes, insulation, etc.
- All exterior dimensions are in two-foot increments, reducing time and waste from cutting lumber.



Accessibility

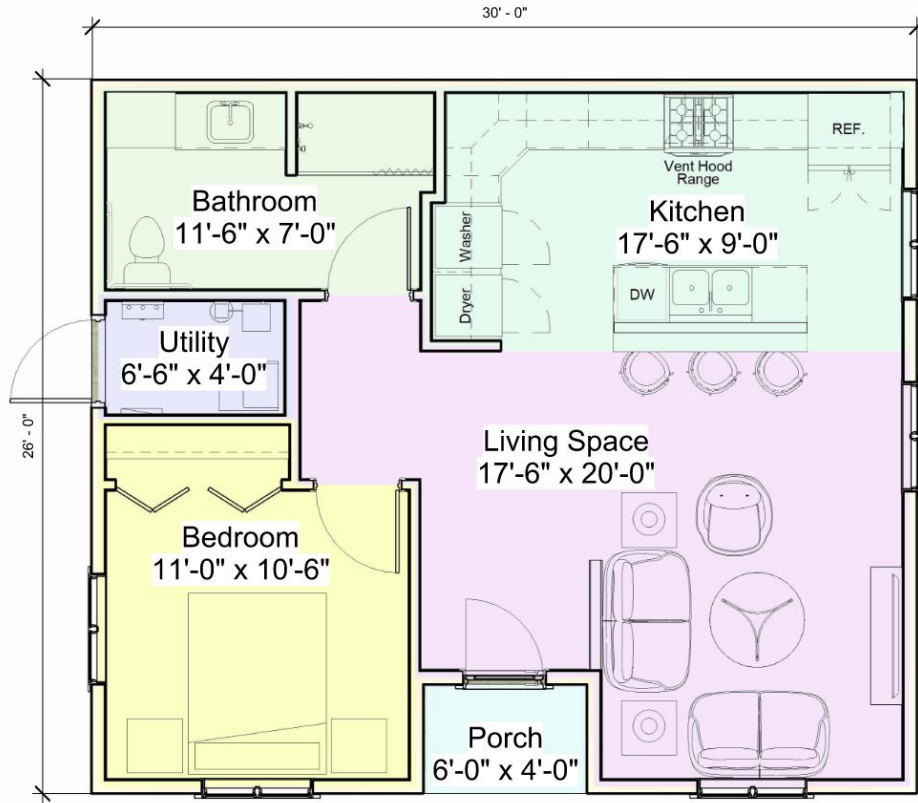
- Following the ICC A117.1-2017 Dwelling Type B standards; rooms, hallways, doors, counter tops, and the flush entrance work in accord to create an accessible environment for the aging or disabled.



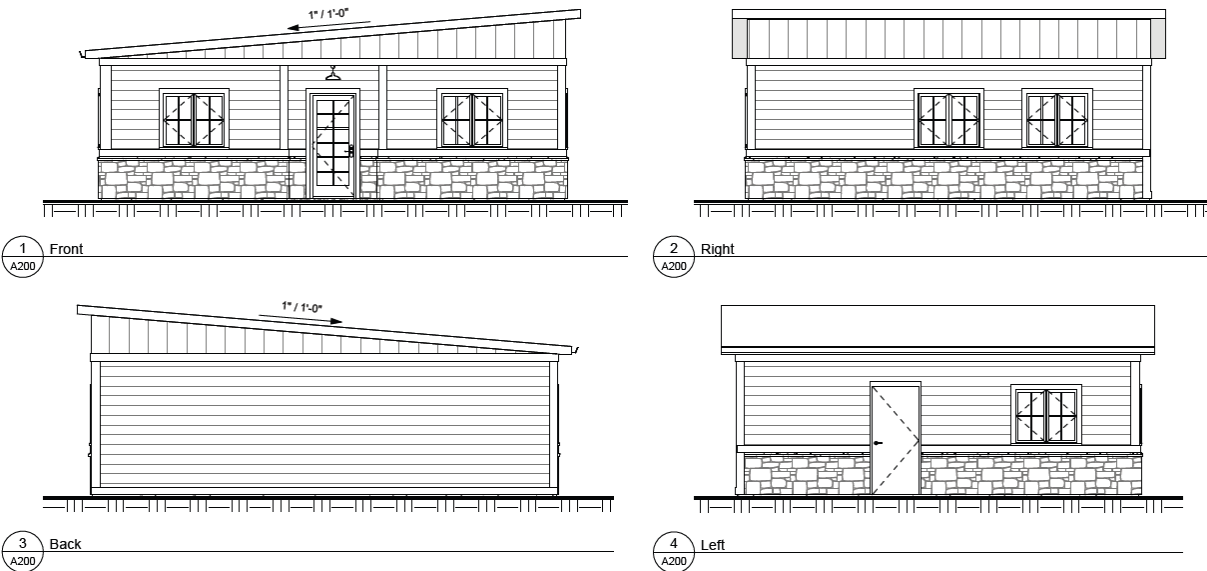
Features

- The exterior is modern but fitting, finishes to match existing home.
- The roof design can be changed to accommodate site, weather, and aesthetics (see back of brochure).
- The interior features an English kitchen, complete with fridge, range, dishwasher, and laundry.
- The utility room has an exterior entrance to allow maintenance without disturbing guests, whether that be an aging relative or a vacation rental tenant.
- Doors into private areas are positioned to reduce visibility from common areas to increase privacy, which can be scarce in small dwellings.
- A covered porch within the footprint of the home reduces time exposed to the elements while you search for the key.

Floor Plan



Elevations



*Gable Roof Option



*Night Rendering



